

**CAN AUTO****TURTLE****FIRST TIME INSTALLATION**

* REMOVE PARTS FROM INSIDE THE PACKAGE AND CHECK THEM ALL

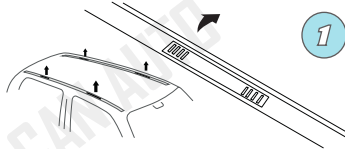
* CONTACT YOUR DEALER IF ANY PART IS MISSING OR DAMAGED

* USE THE EQUIPMENT SPECIFIED FOR INSTALLATION

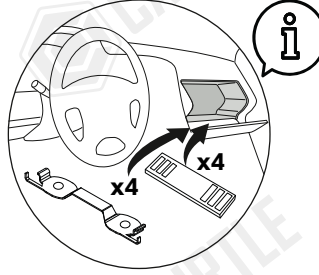
ASSEMBLY INSTRUCTIONS (ROOF RAIL)
Product Code: MR01050 (Crown)**COMPATIBLE VEHICLES**
TYT RAV4 (XA40) SUV 13-18**PACKAGE INCLUDED**

1- CROWN STOPPLE	4
2- M6x25 INBUS BOLT	4
3- D6 WASHER	4
4- M6 SPEED NUT	4
5- BRACKET (FR/RL)	2
6- BRACKET (FL/RR)	2
7- SPONGE TAPE	8
8- 5MM ALLEN WRENCH	1
9- LIQUID RUBBER	1

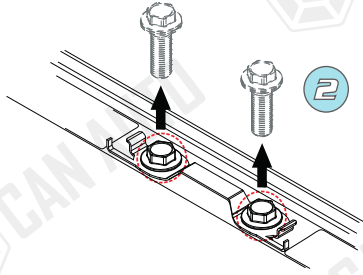
ZIPLOCK BAG



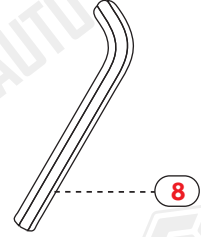
Araç tavanındaki plastik parçaları sökünüz ve saklayınız.
Remove and store the plastic parts on the vehicle roof.



Belirtilen parçaları sökünüz ve saklayınız.
Remove and keep the specified parts.

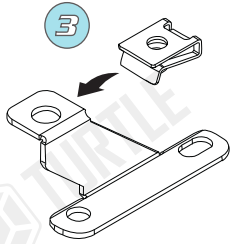


Belirtilen civataları sökünüz, metal parçayı çıkarıp saklayınız.
Braketler aracın kendi civataları ile monte edilecek.
Unscrew the specified bolts, remove the metal part and store it.
The brackets will be mounted with the vehicle's own bolts.



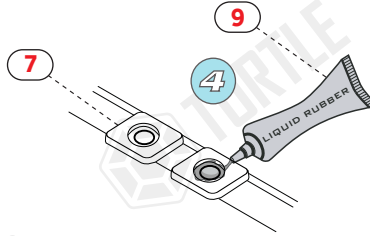
Bağlantı noktalarının üzerine sünger bandı şeklindeki gibi yapıştırıp, silikon contayı süngerin ortasındaki boşluğa sıkınız. Uygulamayı 3dk içerisinde kurumadan tamamlayınız.

Stick the sponge tape on the connection points as in the figure and squeeze the liquid rubber into the gap in the middle of the sponge.
Apply in 3min before silicone dry.

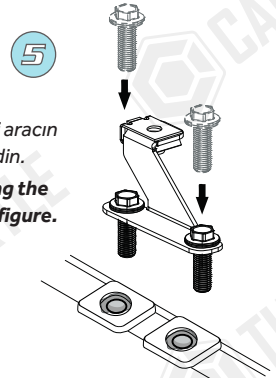


M6 klipsi şekilde belirtildiği gibi braketine takınız.

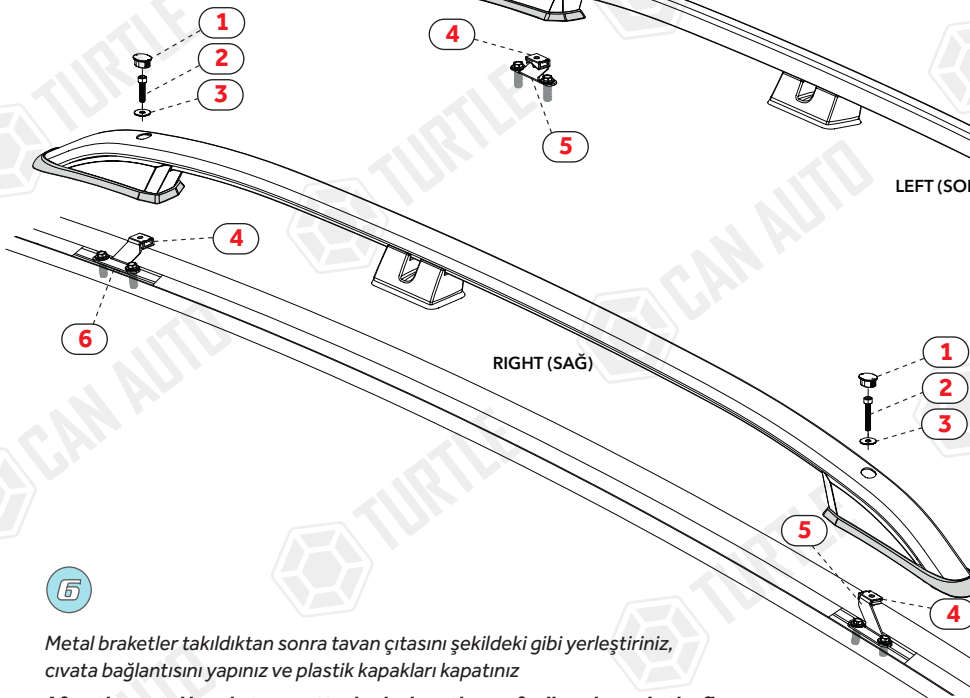
Attach the M6 clip to the bracket as indicated in the illustration.



Metal braket, şekilde gösterildiği gibi aracın kendi civatalarını kullanarak monte edin.
Assemble the metal bracket by using the vehicle's own bolts as shown in the figure.



LEFT (SOL)



RIGHT (SAĞ)

FRONT (ÖN)

6

Metal braketler takıldıktan sonra tavan çitasını şekildeki gibi yerleştiriniz, civata bağlantısını yapınız ve plastik kapakları kapatınız

After the metal brackets are attached, place the roof rail as shown in the figure, make the bolt connection and close the plastic covers.